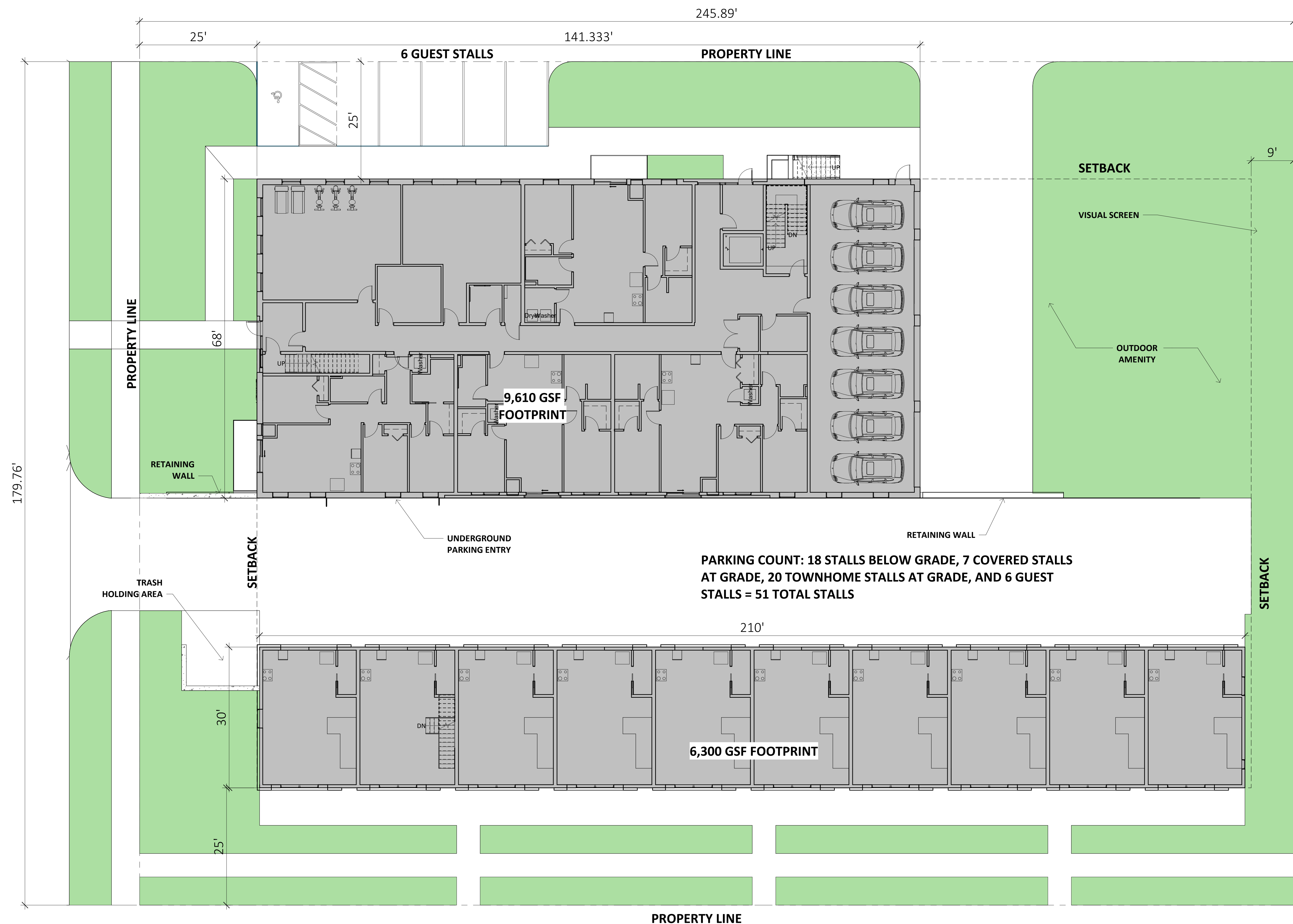


**2 SITE SECTION**  
1/8" = 1'-0"



**1 ARCHITECTURAL SITE PLAN**  
1" = 10'-0"

**SITE INFORMATION**

SITE LOCATION:  
NE CORNER OF INTERSECTION OF MARSHALL AVE. AND FINN STREET IN ST. PAUL, MN

ZONING: RM-1

SETBACKS:  
FRONT YARD: 25 FT  
SIDE YARD: 9 FT  
REAR YARD: 25 FT

MAX LOT COVERAGE: 35%  
LOT AREA INCREASE:  
1/2 WIDTH OF ADJOINING ALLEY SHALL BE CONSIDERED PART OF LOT  
44,087 + 2456 = 46,543 SF

LOT AREA: APPROX. 46,543 SF X 35% = 16,290 SF MAX. TOTAL BUILDING FOOTPRINT  
TOTAL BUILDING FOOTPRINT: 15,910 SF - OK

LOT AREA PER UNIT: 2000 SF/UNIT  
ADD 300 SF FOR EACH PARKING SPACE (MAX. 2 PER UNIT) WITHIN A MULTIPLE-FAMILY STRUCTURE OR COMPLETELY UNDERGROUND.  
45 COVERED STALLS  
45X300 = 13,500+46,543 = 60,043 SF LOT / 2000 = 30 MAX. UNITS

PARKING REQUIREMENT: 1 SPACE PER 1-2 ROOM UNIT,  
1.5 SPACES PER 3-4 ROOM UNIT, AND  
2 SPACES PER UNIT WITH 5 OR MORE ROOMS.

FOR THE PURPOSE OF THIS REQUIREMENT:  
EFFICIENCY UNIT = 3 ROOM,  
ONE BEDROOM UNIT = 2 ROOMS,  
TWO BEDROOM UNIT = 3 ROOMS,  
THREE BEDROOM UNIT = 4 ROOMS,  
FOUR BEDROOM UNIT = 5 ROOMS, AND SO ON.  
A DEN, LIBRARY, OR OTHER EXTRA ROOM SHALL COUNT AS A ROOM;  
KITCHEN, DINING AND SANITARY FACILITIES SHALL NOT

CALCULATIONS:  
(1) 10 TOWNHOMES WITH 3 BD = 10X1.5=15  
(2) 1 BD APTS = 2X1=2  
(10) 2 BD APTS = 10X1.5=15  
(6) 3 BD APTS = 6X1.5=9  
(2) 4 BD APTS = 2X2=4  
15+2+15+9+4=45 REQUIRED PARKING STALLS

**Area Schedule (Gross Building)**

Name	Area
FLATS LEVEL 1	9,611 SF
FLATS LEVEL 2	9,623 SF
FLATS LEVEL 3	9,623 SF
FLATS LOWER LEVEL	8,160 SF
TOWNHOMES LEVEL 1	6,034 SF
TOWNHOMES LEVEL 2	6,315 SF
TOWNHOMES LEVEL 3	6,315 SF
TOWNHOMES LOFT LEVEL	2,245 SF
TOTAL	57,927 SF

**Area Schedule Flats**

Name	Area
FLATS LOWER LEVEL	8,160 SF
FLATS LEVEL 1	9,611 SF
FLATS LEVEL 2	9,623 SF
FLATS LEVEL 3	9,623 SF
TOTAL	37,018 SF

**Area Schedule Townhomes**

Name	Area
TOWNHOMES LEVEL 1	6,034 SF
TOWNHOMES LEVEL 2	6,315 SF
TOWNHOMES LOFT LEVEL	2,245 SF
TOWNHOMES LEVEL 3	6,315 SF
TOTAL	20,910 SF

**UNIT SCHEDULE - FLATS**

Name	Area	Count
1 BD A	1,072 SF	2
2 BD A	6,714 SF	7
2 BD B	1,048 SF	1
2 BD C	1,777 SF	2
3 BD A	3,461 SF	3
3 BD B	1,205 SF	1
3 BD C	2,167 SF	2
4 BD A	2,537 SF	2
TOTAL	19,981 SF	20





